



B&G CLEANING SYSTEMS LTD

SALES • SERVICE • HIRE • SPARES • ACCESSORIES

Unit 1b Marchington Ind Est,
Marchington, Staffs, ST14 8LP
Tel: 01283 821363 Fax: 01283 821373

Abeles Way, Holly Lane Ind Est,
Atherstone, Warks, CV9 2QZ
Tel: 01827 717028 Fax: 01827 714041

Unit 6, Primrose Hill Trading Est, Cradley Road,
Netherton, West Midlands DY2 9SA
Tel: 01384 238083 Fax: 01384 239324



Drive Cleaning Kit Special Offer

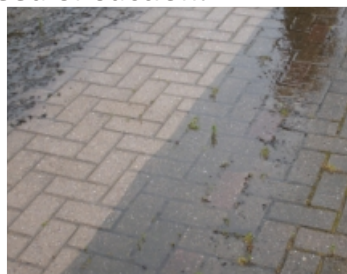
Free Phone 0800 542 6356

Depots in Staffordshire, Warwickshire & West Midlands

The EDGE Ranger petrol powered pressure washer is powerful enough to cope with the demands of professional drive & patio cleaning. When combined with a rugged Rotawash unit it makes easy work of flat surface cleaning. The EDGE Ranger can also be used for washing many other surfaces using the powerful spray lance.

The EDGE Ranger "Drive Cleaning Kit" is the perfect choice for the professional cleaner.

- Well proven genuine Honda GX200 engine.
- Large pneumatic tyres for stability & easy manoeuvrability.
- High quality brass headed pump unit.
- Quality oil filled reduction gearbox ensures long life reliability.
- Low pump speed enables the EDGE Ranger to be used from mains water feed or suction.
- Flow & pressure adjustment.
- Easy start valve fitted.
- Robust powder coated frame.



EDGE Ranger Petrol Powered Drive Cleaning Kit

Kit Includes:

- EDGE Ranger 14/150PT.
- 400mm / 16" Rotawash.
- 10-Metre Hose, Gun & Lance.
- Suction Hose & Filter.
- Chemical Intake Hose.

£1,449 + VAT

Available while stocks last

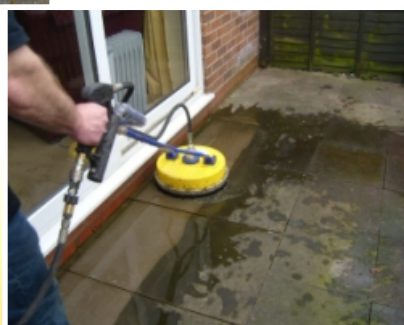


Other models available. Please ask for details.

Optional Extras

- Turbo lance £50 +vat
- 10-metre high pressure hose £46 +vat

Upgrade to an 18" Rotawash
at no extra cost



www.bgclean.co.uk
sales@bgclean.co.uk

Issue no: 1

Code: cleaning kit12